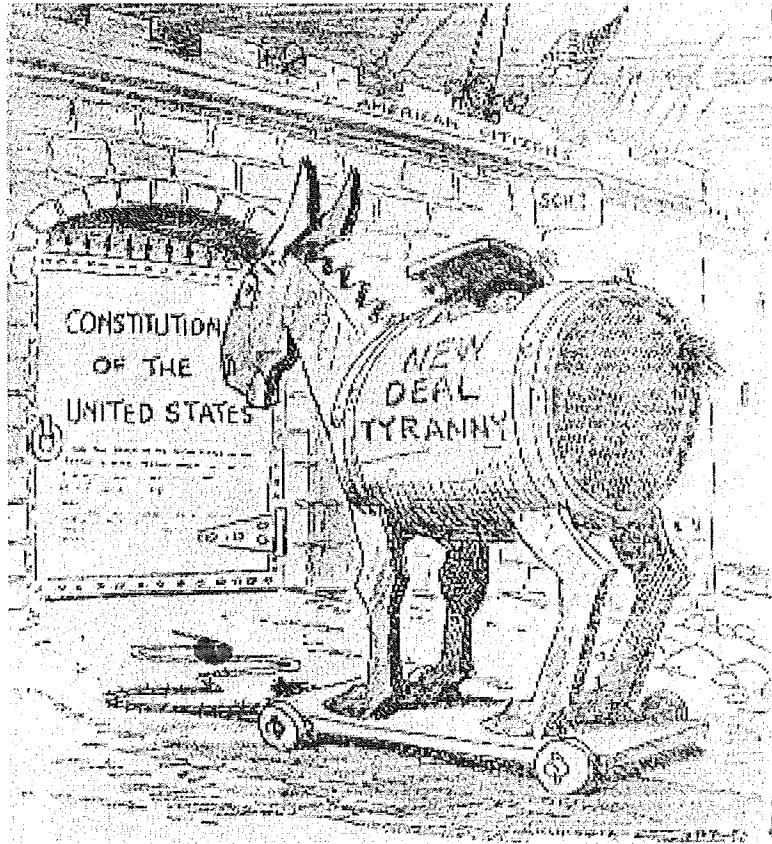


## Essay Rubric

Grade	Use of primary sources	Historical Accuracy	Writing
A	<p>All primary sources referenced</p> <p>Sources used when appropriate</p> <p>Sources enhance thesis</p>	<p>Points made are factual</p> <p>Student uses information from sources and from class lessons</p>	<p>Writing is clear</p> <p>Paper is organized</p> <p>No spelling or grammar errors</p> <p>Clear thesis</p>
B	<p>All primary sources referenced</p> <p>Sources supports thesis, but student's argument needs more development</p>	<p>Almost all points are factual</p> <p>Student uses information from sources and class lessons</p>	<p>Clear writing</p> <p>Fairly organized</p> <p>Few spelling or grammar errors</p> <p>Clear thesis</p>
C	<p>Student references most of the primary sources</p> <p>Student attempts to use sources to develop argument</p>	<p>Contains several factual errors</p> <p>Student uses information from sources, but fails to include enough information from class</p>	<p>Writing is unclear at times</p> <p>Needs more organization</p> <p>Thesis needs revisions</p>
D	<p>Student only includes one sources</p> <p>Source not used to develop argument</p>	<p>Contains several factual errors</p> <p>Student does not use information from sources</p>	<p>Unclear writing</p> <p>Needs more organization</p> <p>Paper has no thesis</p>

Source # 3



*Recovery Package* by John Baer, 1932

**Points to think about:**

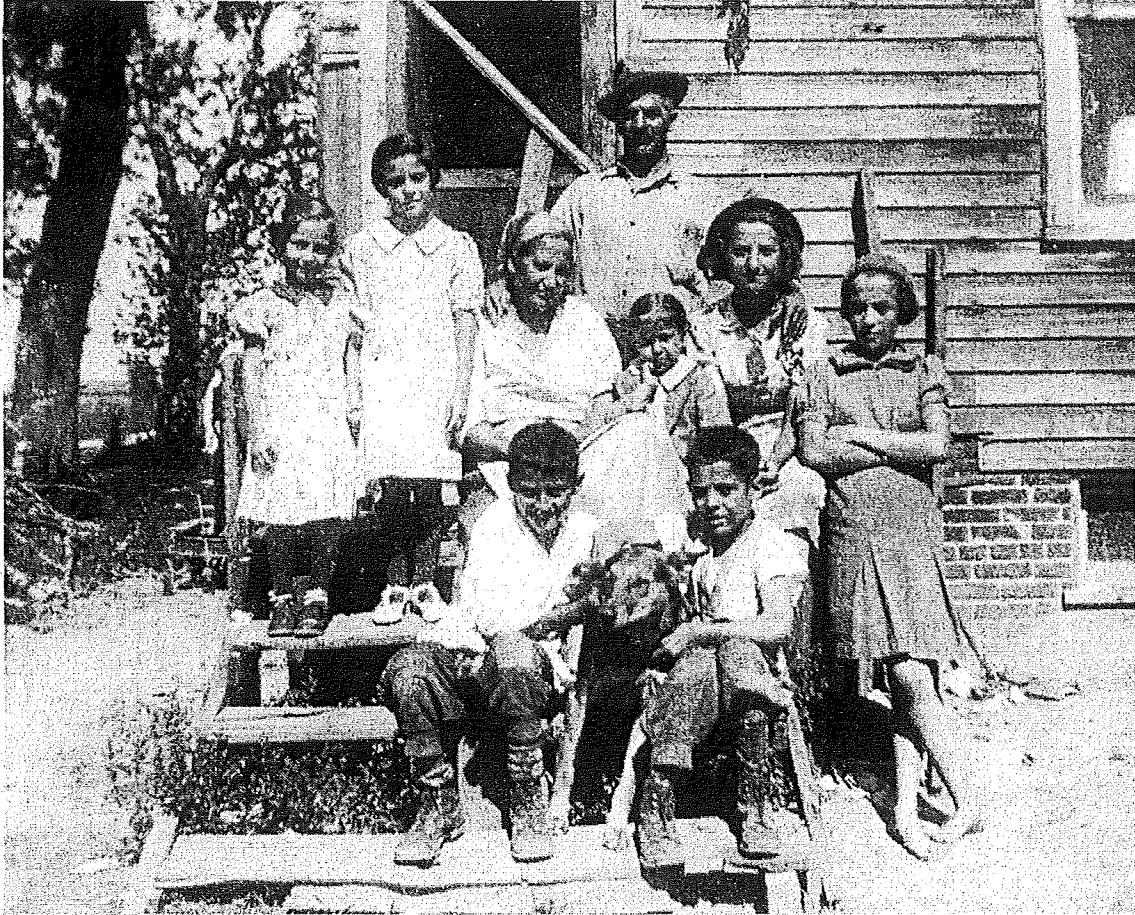
What does the horse represent? What is the cartoonist suggesting about Roosevelt's policies?

What is tyranny? Would the millions of Americans desperate for work or food consider the New Deal tyranny?

Did Roosevelt abuse his power as president to get his goals accomplished?

Source # 4 FDR Acceptance Speech for Democratic Nomination, July 1932

Source #1



This is a picture of a family living in the United States in 1931.

**Points to think about:**

What were conditions like for most Americans in 1931?

What measures were taken by the federal government to protect and aid ordinary Americans before Roosevelt was elected?

How do you think this family felt about President Hoover's refusal to provide government relief?

Do you think this family was hopeful about the future?