

Westampton Township Public Schools

State of the Schools Report Highlights and Achievements 2014

Presentation Date: October 15, 2014

Presented By:

Ginny Grossman, M.A., Ed., Superintendent

Debbie Keeney, M.A., Ed., Child Study Team Supervisor

Jennifer Murray, M.A., Ed., Supervisor of Curriculum and
Instruction

Rachel Feldman, Ed. D., Holly Hills Principal

Mathew Andris, M.A., Ed., Westampton Middle School Principal

Tracy McGuire, Board Secretary

EIRC, Technology

District Goals 2014-2015

Student Achievement:

Continue to implement formative and on-line assessments of student performance in order to ensure that our programs and their execution meet the expectations set forth in the Common Core State Standards.



District Goals 2014-2015

Community Engagement:

Improve the frequency, quality and consistency of communication that will enhance parent and community involvement.

District Goals 2014-2015

Human Resources: Continue to work toward matching our community and student diversity in our staff.



Student Achievement and WTPS District Initiatives

District Goals

State Mandated Assessment Reports

Child Study Team Initiatives

NJCCS Curricular Initiatives

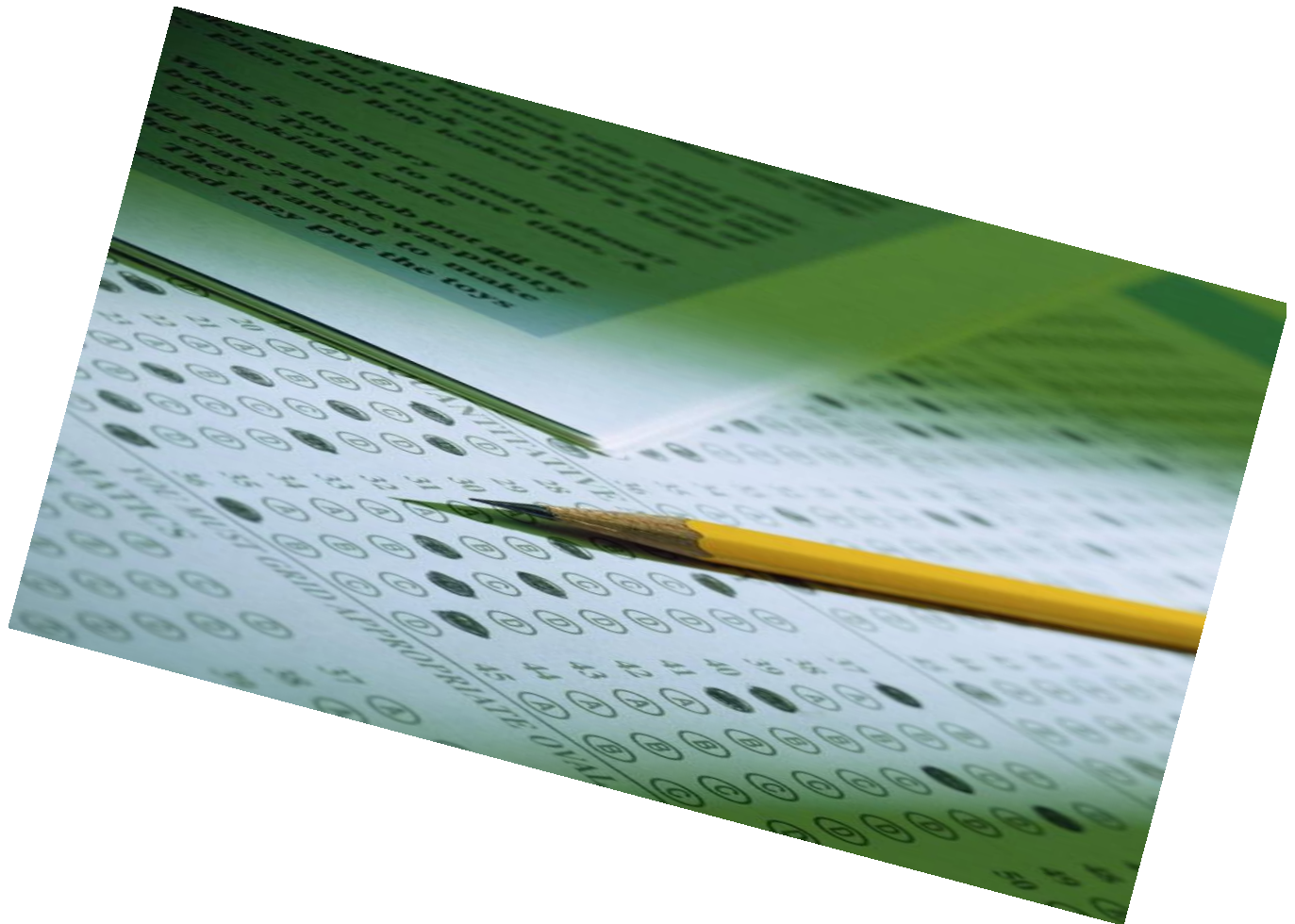
Student Discipline Reports

Board of Education Goals

PARCC, NJ ASK and School Funding

- Participation in Annual State Assessments: PARCC and NJ ASK, is mandatory.
- Participation is tied to state and federal funding to our district:
 - State Funding: \$3,477,664.00
 - NCLB Federal Grant Funding: \$129,919.00

NJ ASK DATA 2014



NJ ASK Subgroups

- **Total Population**

- **Ten Subgroups*:**

Students with Disabilities

Limited English Proficient

White

African American

Asian

Pacific Islander

Native American

Hispanic

Other

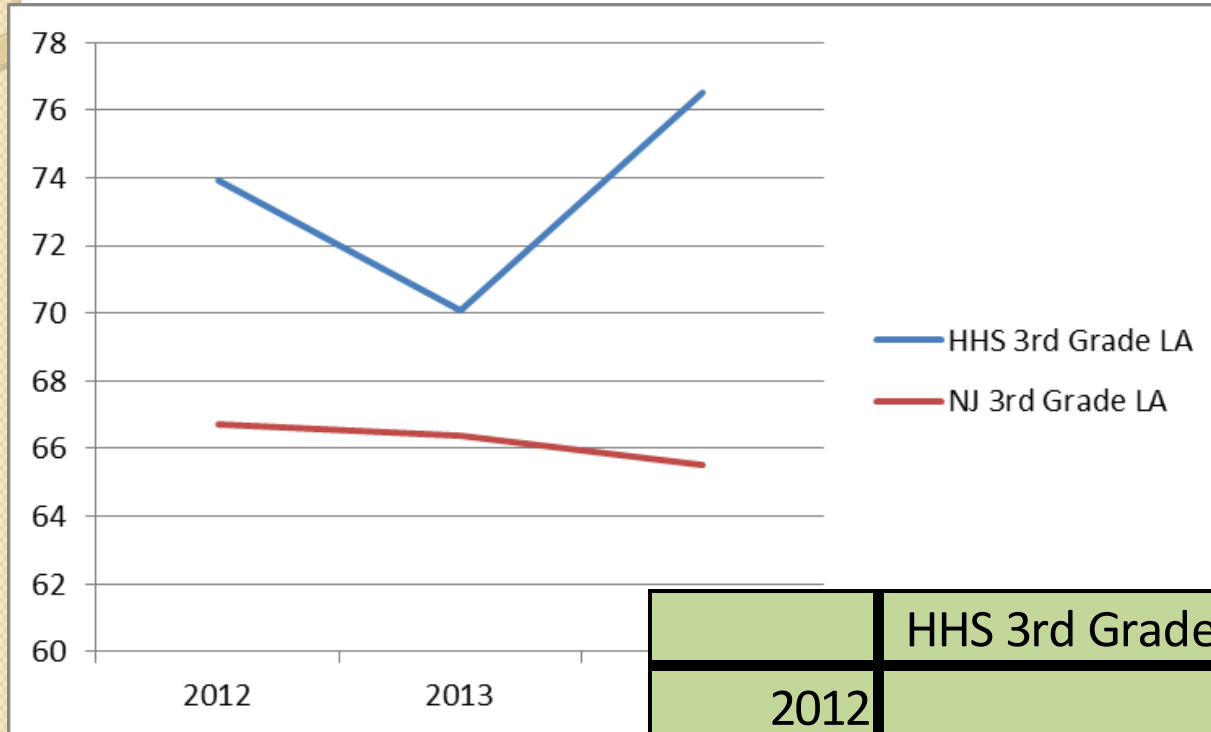
Economically Disadvantaged

(*Must have 30 participants for group report)

History of the NJ ASK

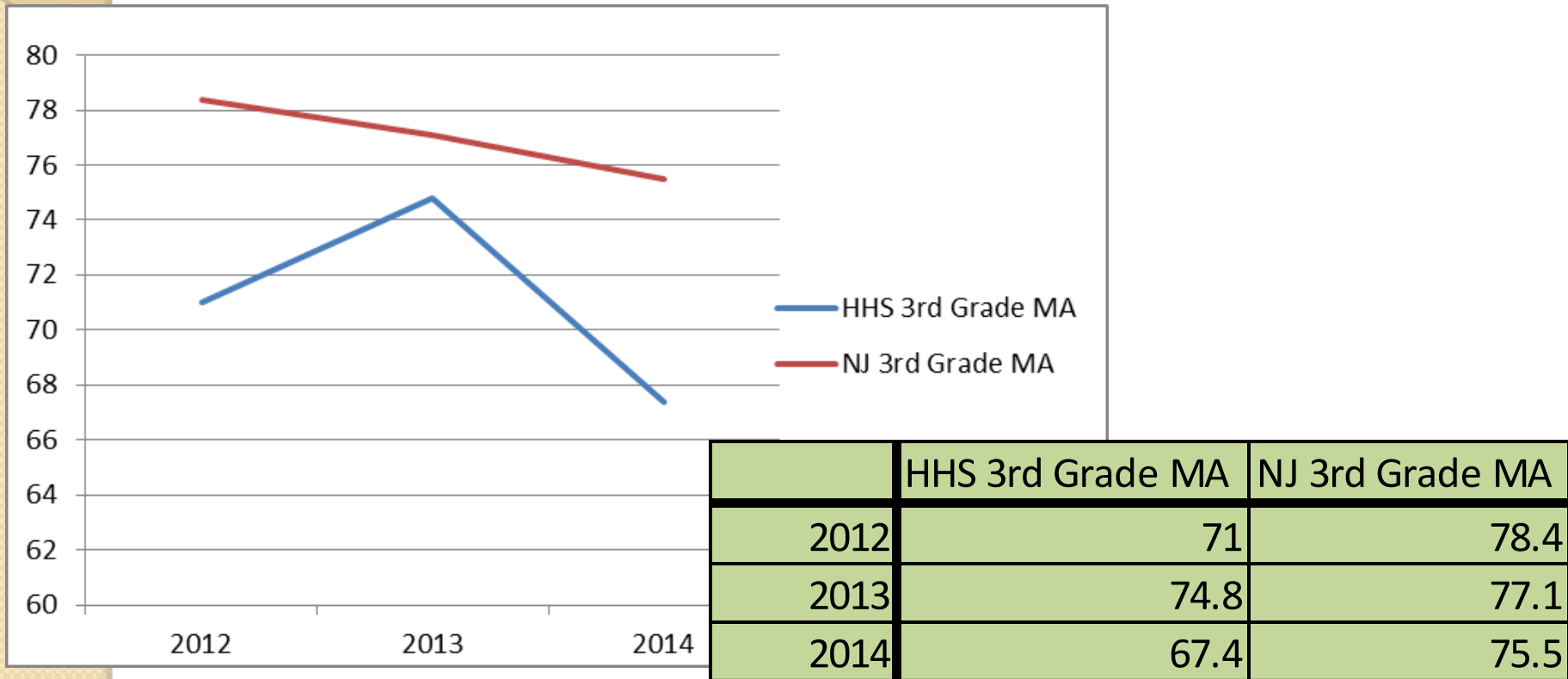
Year	NJ ASK History
2003	NJASK 4 replaced ESPA NJASK 3 administered for the first time
2005	Targets for adequate yearly progress (AYP) raised at grades 3, 4, and 8.
2006	NJASK 5–7 administered for the first time
2008	New tests introduced for NJASK 5–7 AYP targets reset based on new test, 5-7 NJASK 8 replaced GEPA New subgroup size determined for all grades
2009	New tests introduced for NJASK 3 & 4 AYP targets reset based on new test, 3 & 4 Changes made in scoring procedures at all grades
2010	Change in scoring company and automatic rescore procedures at all grades
2011	Targets for AYP were raised again at all grade levels
2012	Annual Measurable Objectives replace Adequate Yearly Progress
2014	NJ ASK Replaced by PARCC on -line Assessment

NJ ASK 3 Language Arts

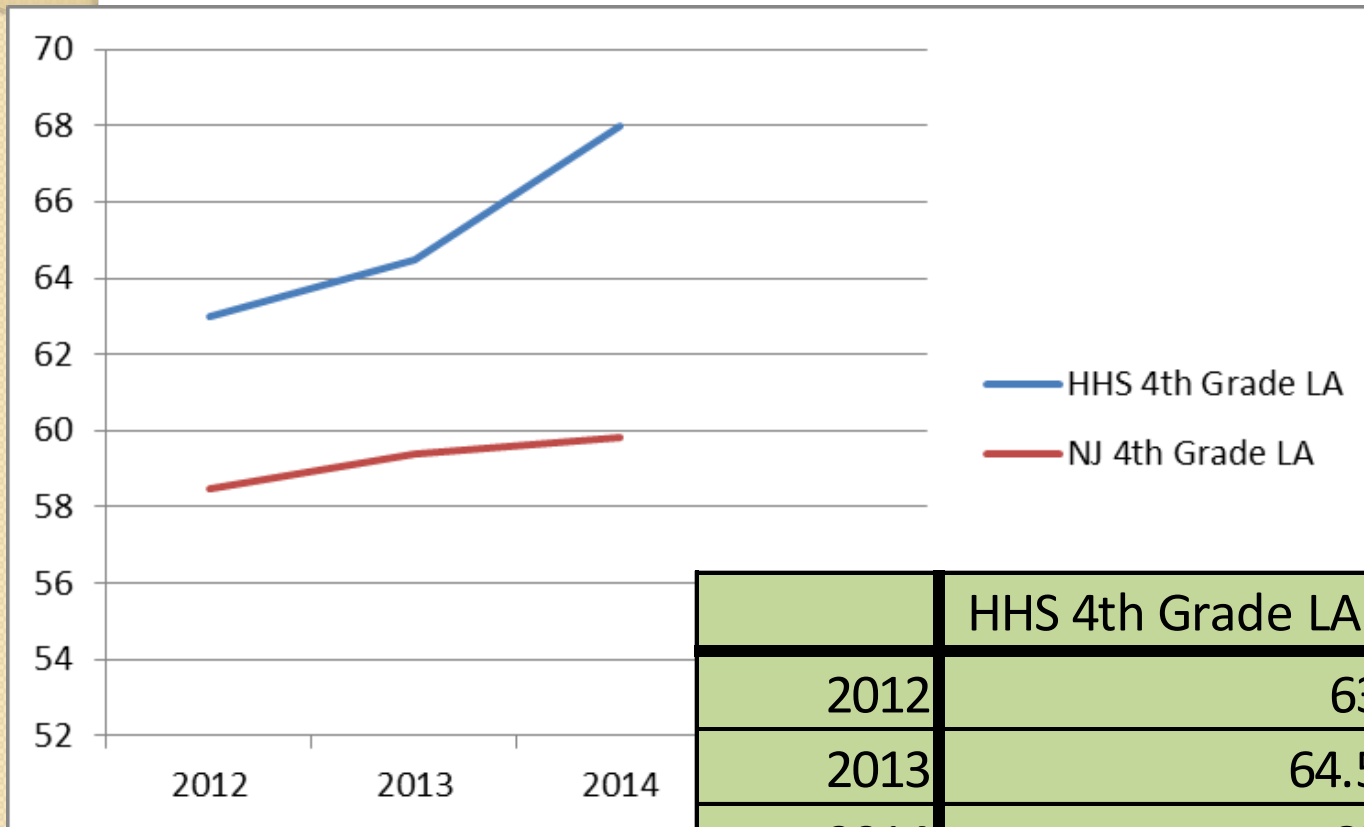


	HHS 3rd Grade LA	NJ 3rd Grade LA
2012	73.9	66.7
2013	70.1	66.4
2014	76.5	65.5

NJ ASK 3 Mathematics

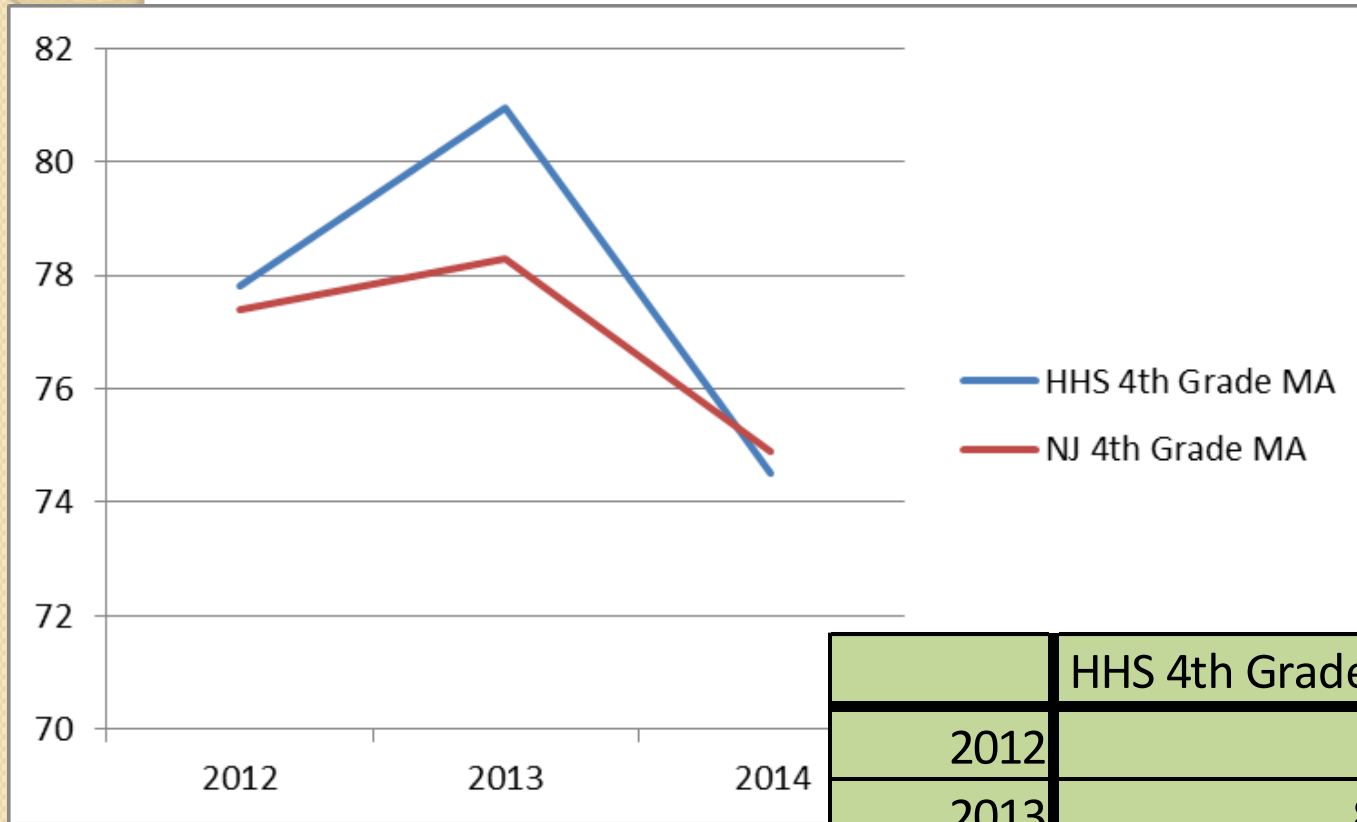


NJ ASK 4 Language Arts



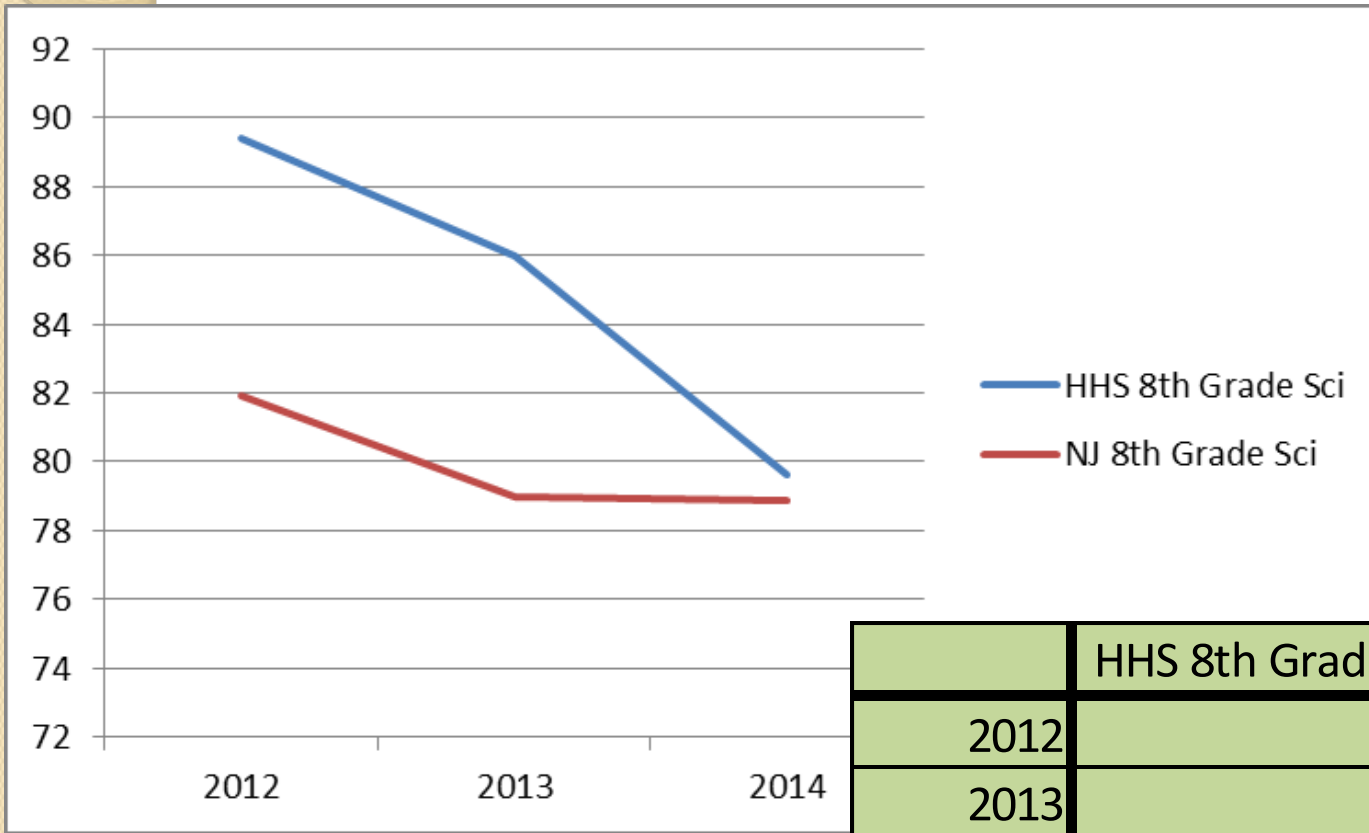
	HHS 4th Grade LA	NJ 4th Grade LA
2012	63	58.5
2013	64.5	59.4
2014	68	59.8

NJ ASK 4 Mathematics



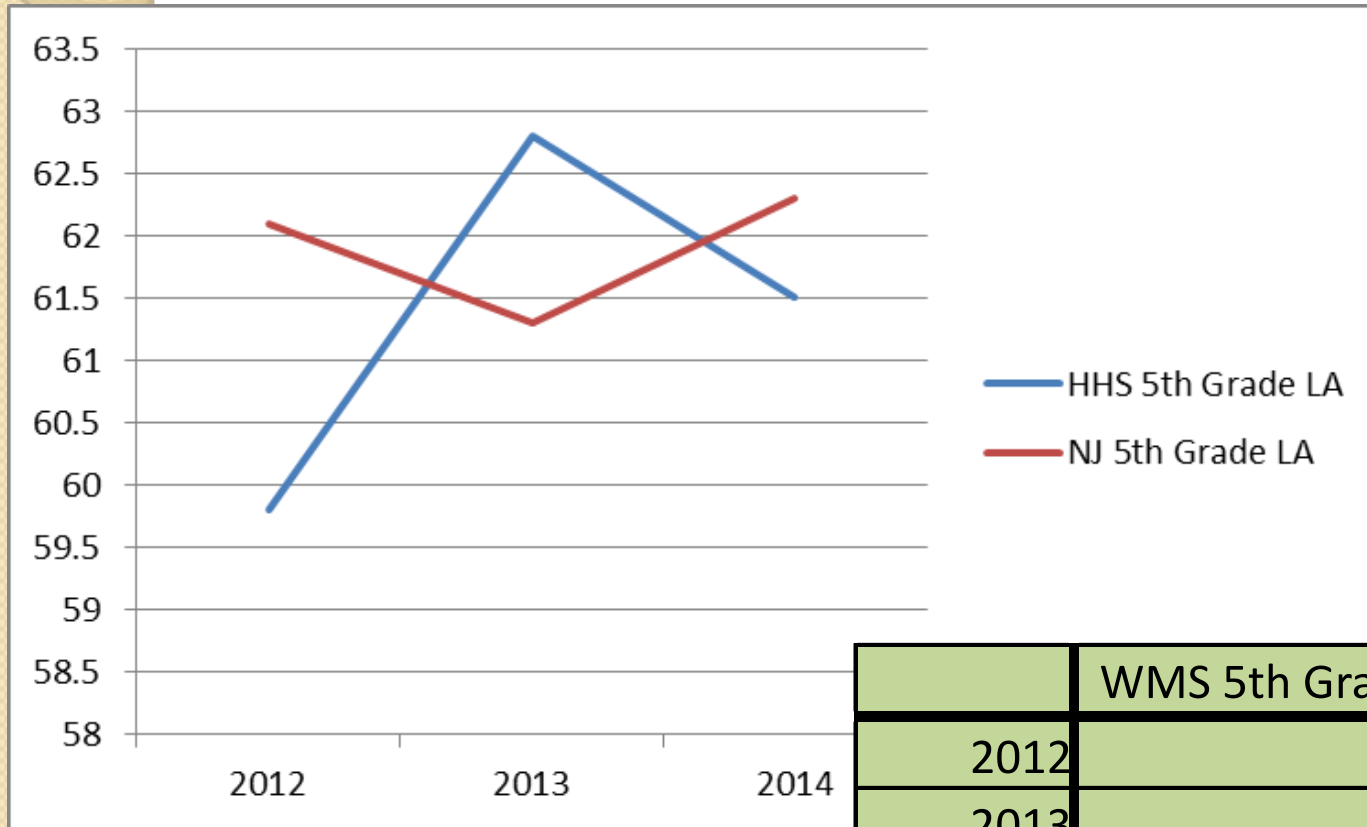
	HHS 4th Grade MA	NJ 4th Grade MA
2012	77.8	77.4
2013	80.96	78.3
2014	74.5	74.9

NJ ASK 4 Science



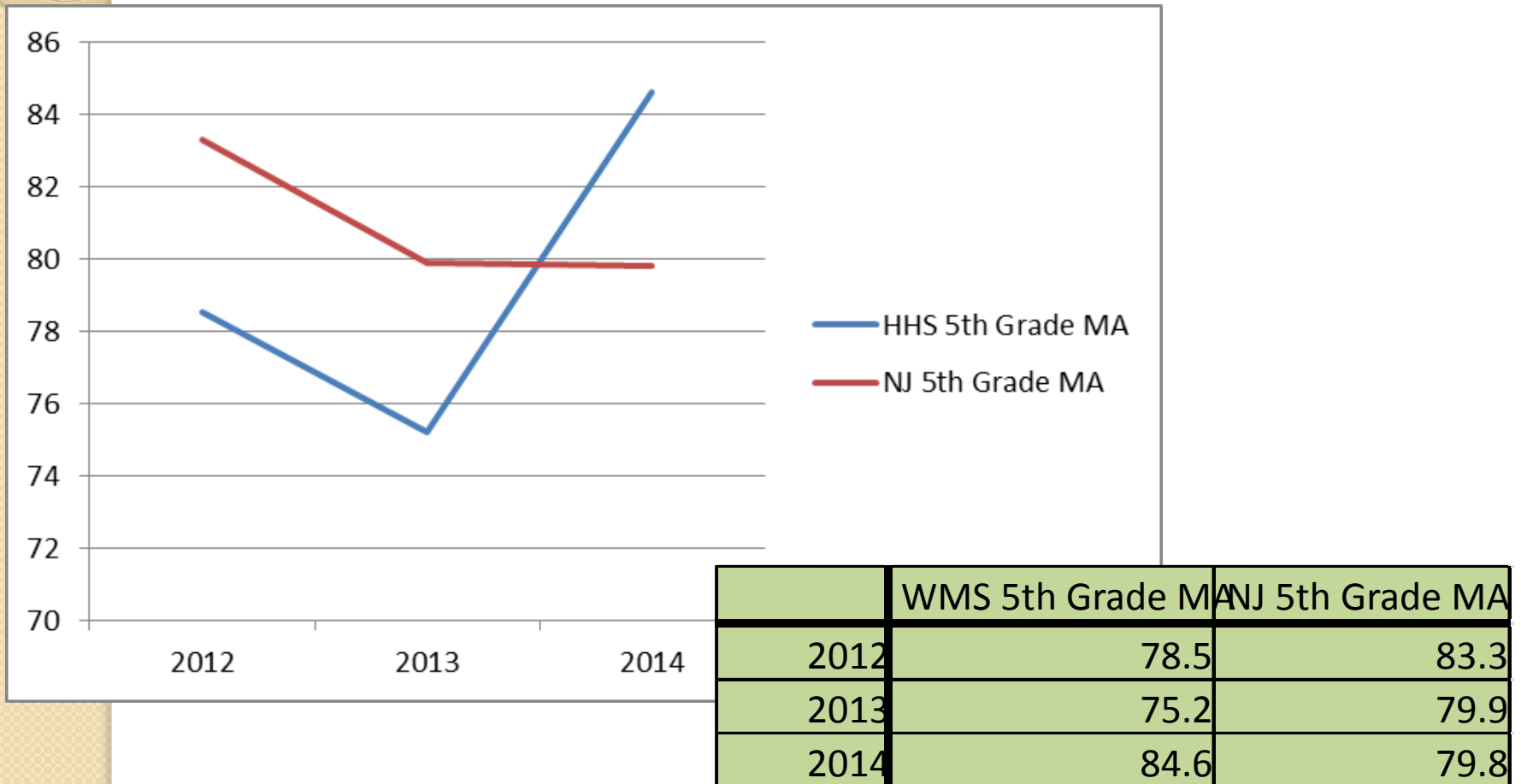
	HHS 8th Grade Sci	NJ 8th Grade Sci
2012	89.4	81.9
2013	86	79
2014	79.6	78.9

NJ ASK 5 Language Arts

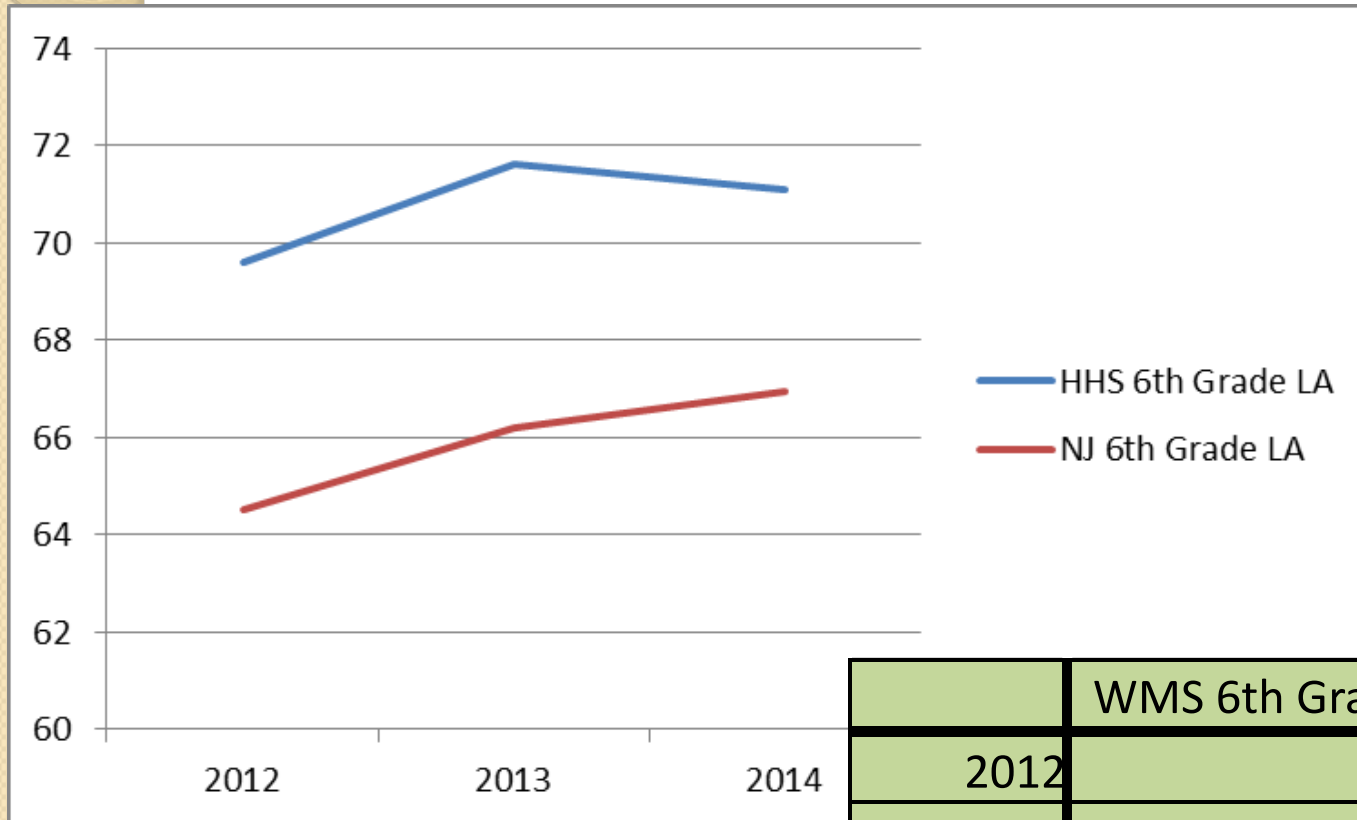


	WMS 5th Grade LA	NJ 5th Grade LA
2012	59.8	62.1
2013	62.8	61.3
2014	61.5	62.3

NJ ASK 5 Mathematics

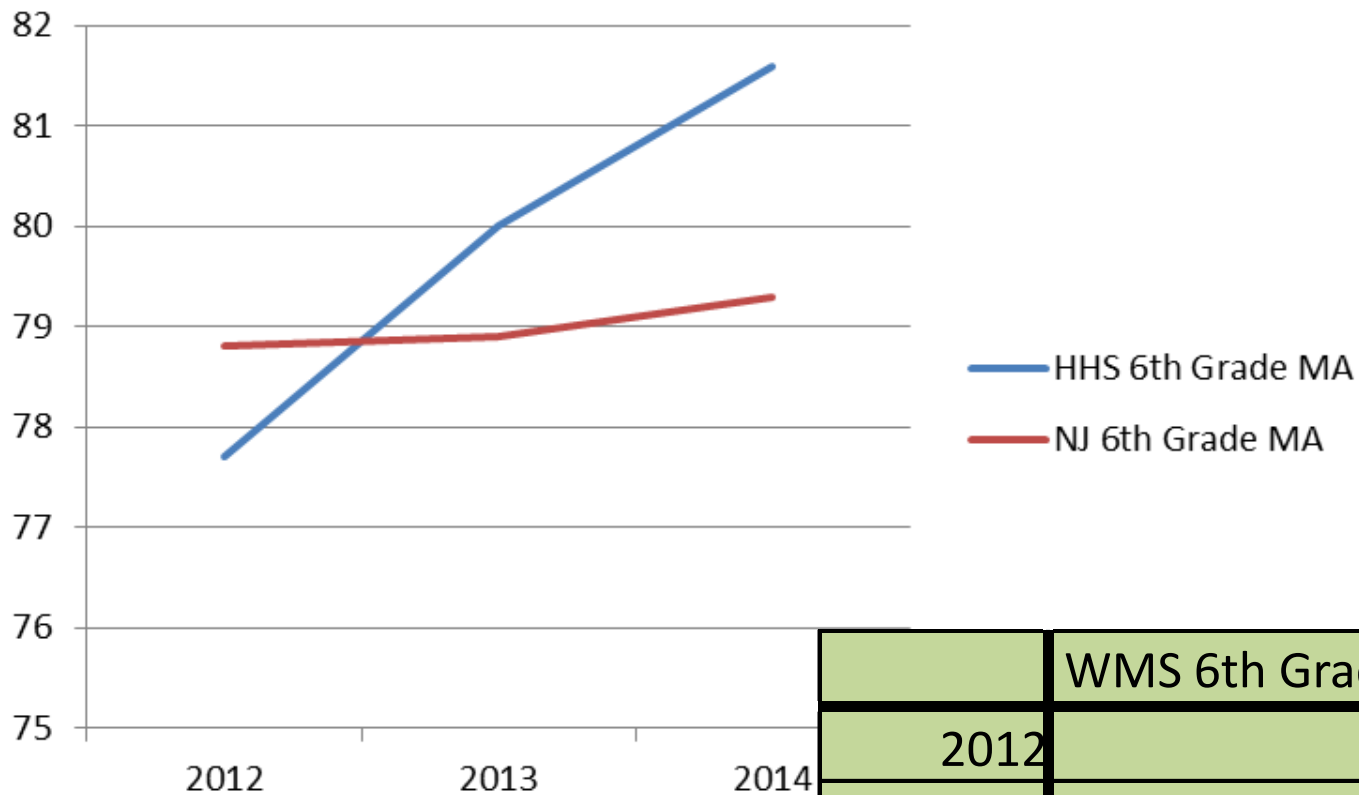


NJ ASK 6 Language Arts



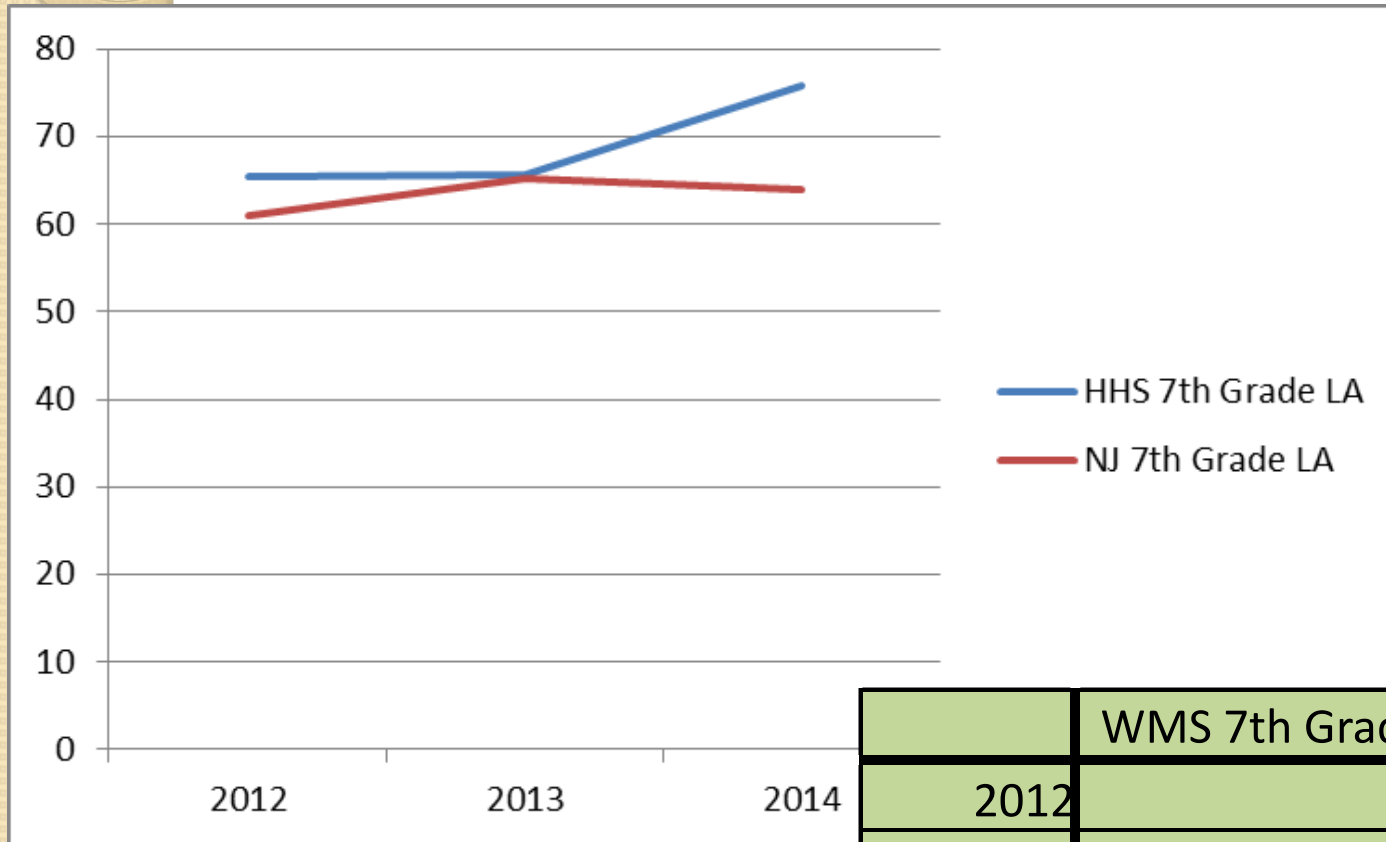
	WMS 6th Grade LA	NJ 6th Grade LA
2012	69.6	64.5
2013	71.6	66.2
2014	71.1	66.96

NJ ASK 6 Mathematics



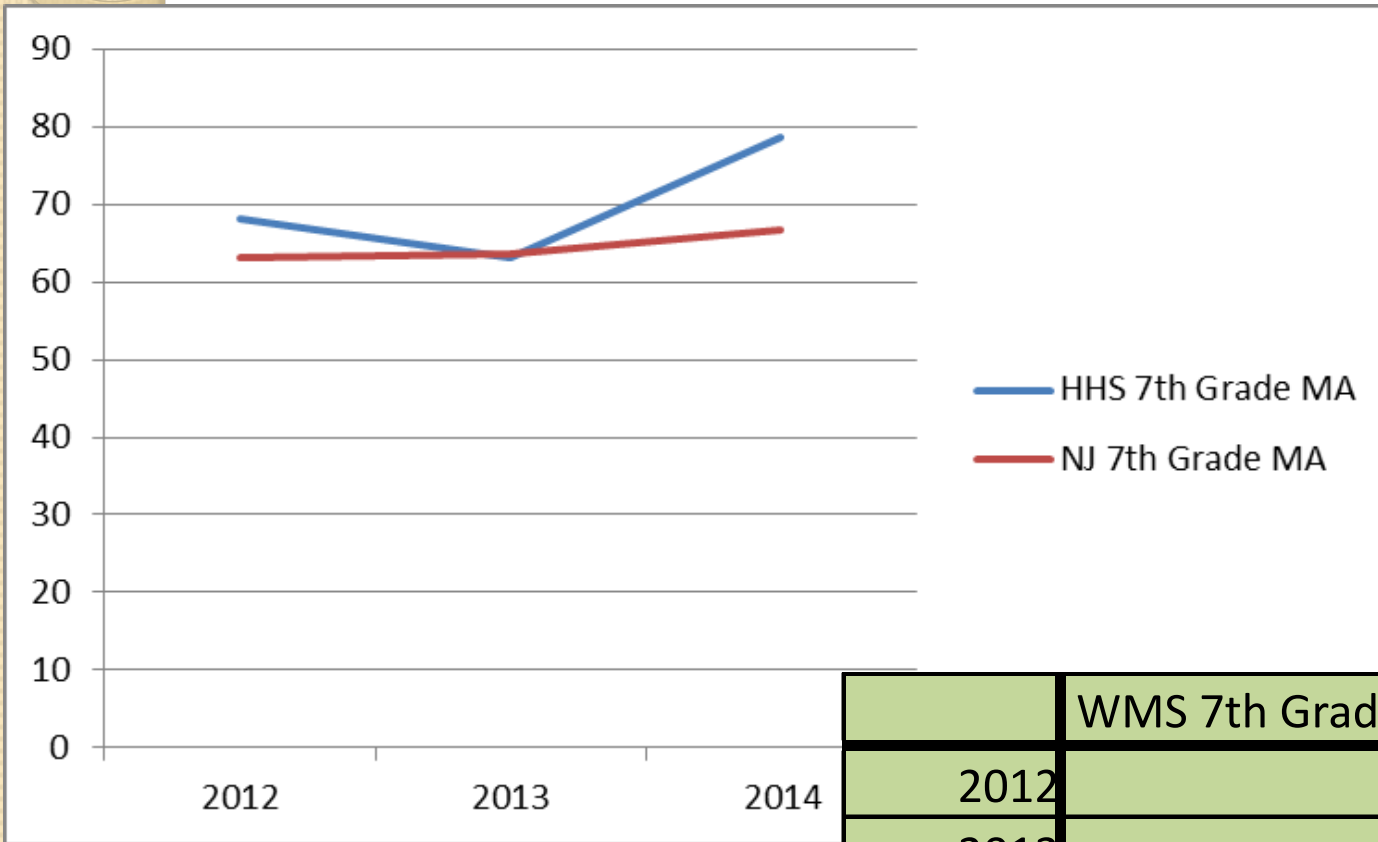
	WMS 6th Grade MA	NJ 6th Grade MA
2012	77.7	78.8
2013	80	78.9
2014	81.6	79.3

NJ ASK 7 Language Arts



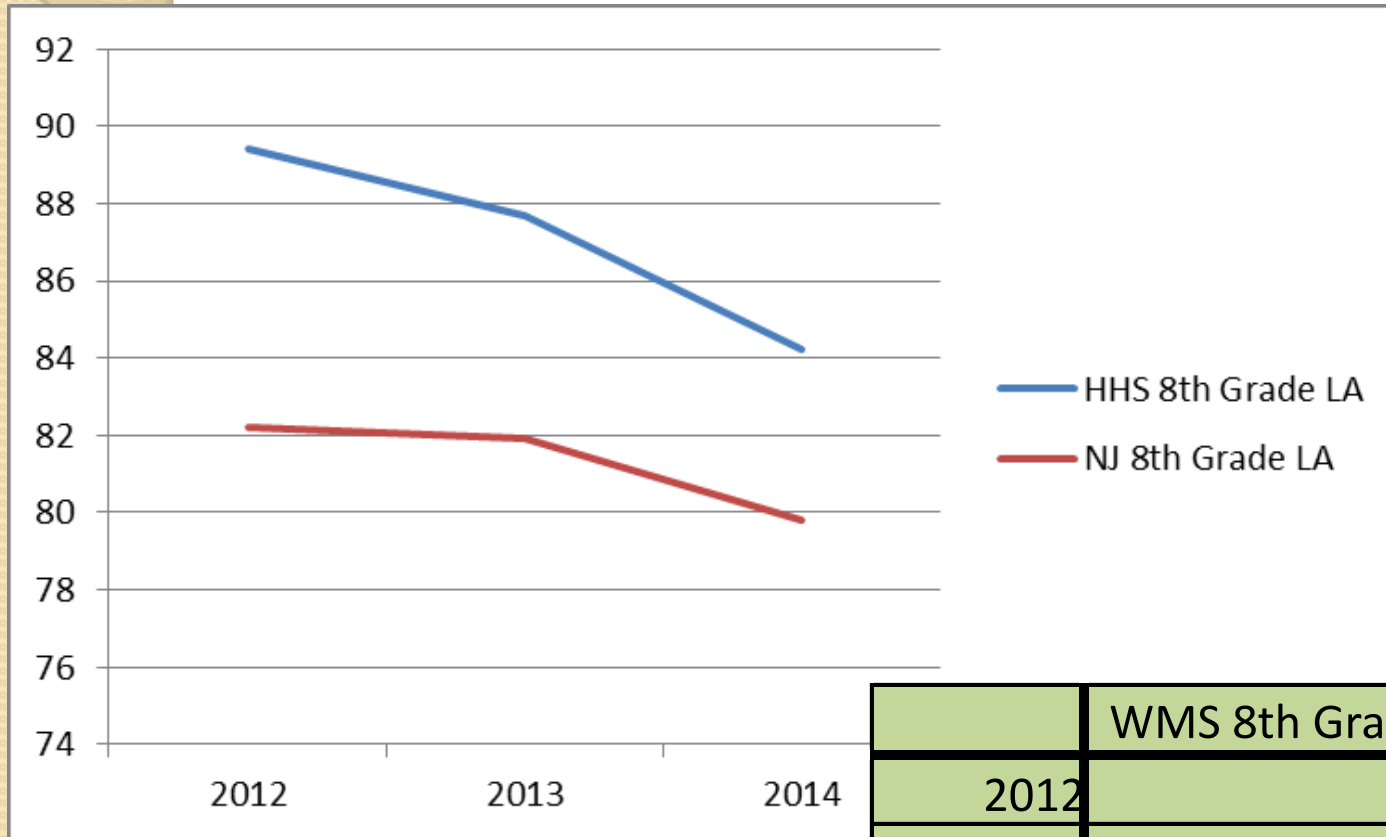
	WMS 7th Grade LA	NJ 7th Grade LA
2012	65.5	61
2013	65.7	65.2
2014	75.8	64

NJ ASK 7 Mathematics



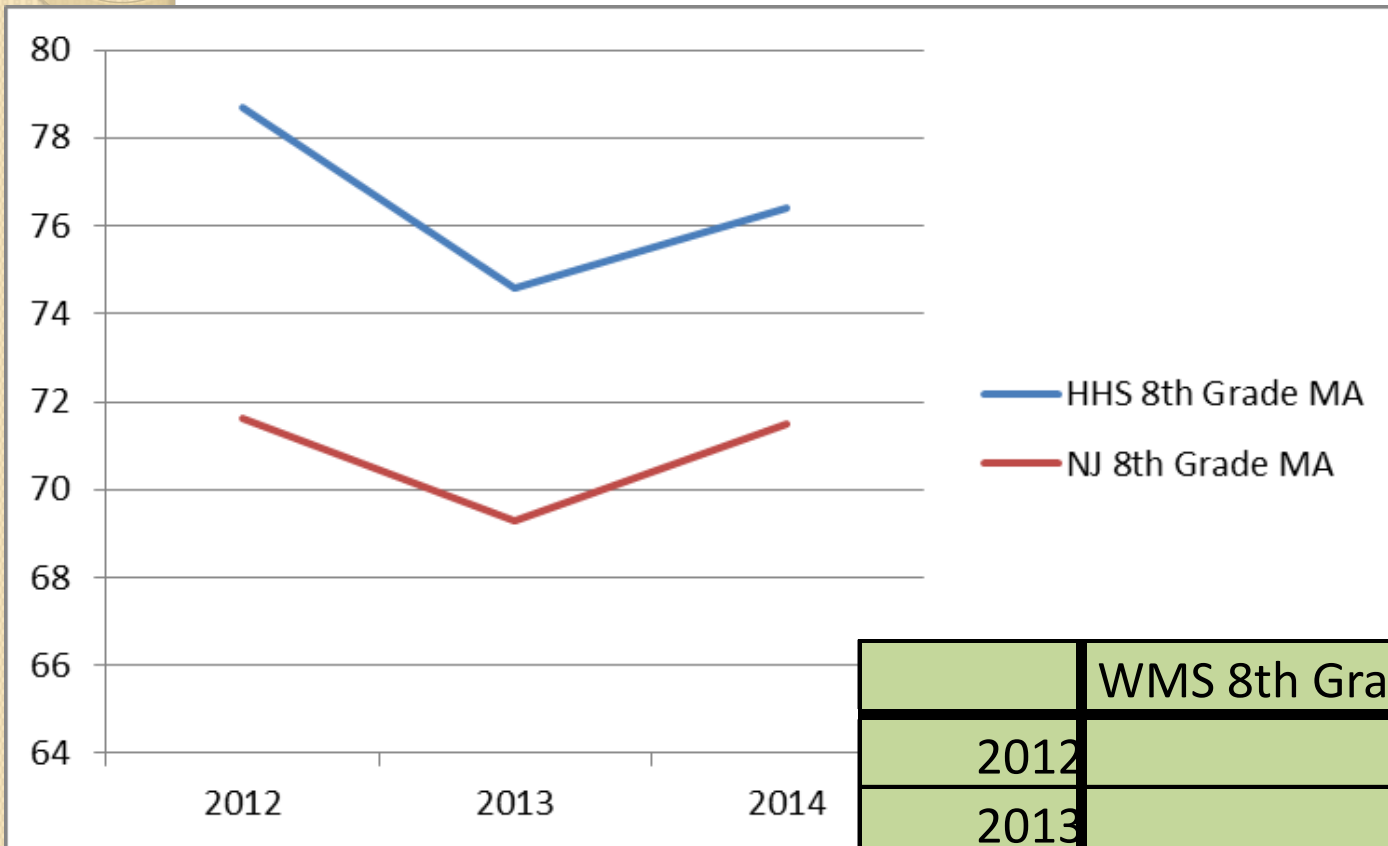
	WMS 7th Grade MA	NJ 7th Grade MA
2012	68.1	63.2
2013	63	63.5
2014	78.7	66.8

NJ ASK 8 Language Arts



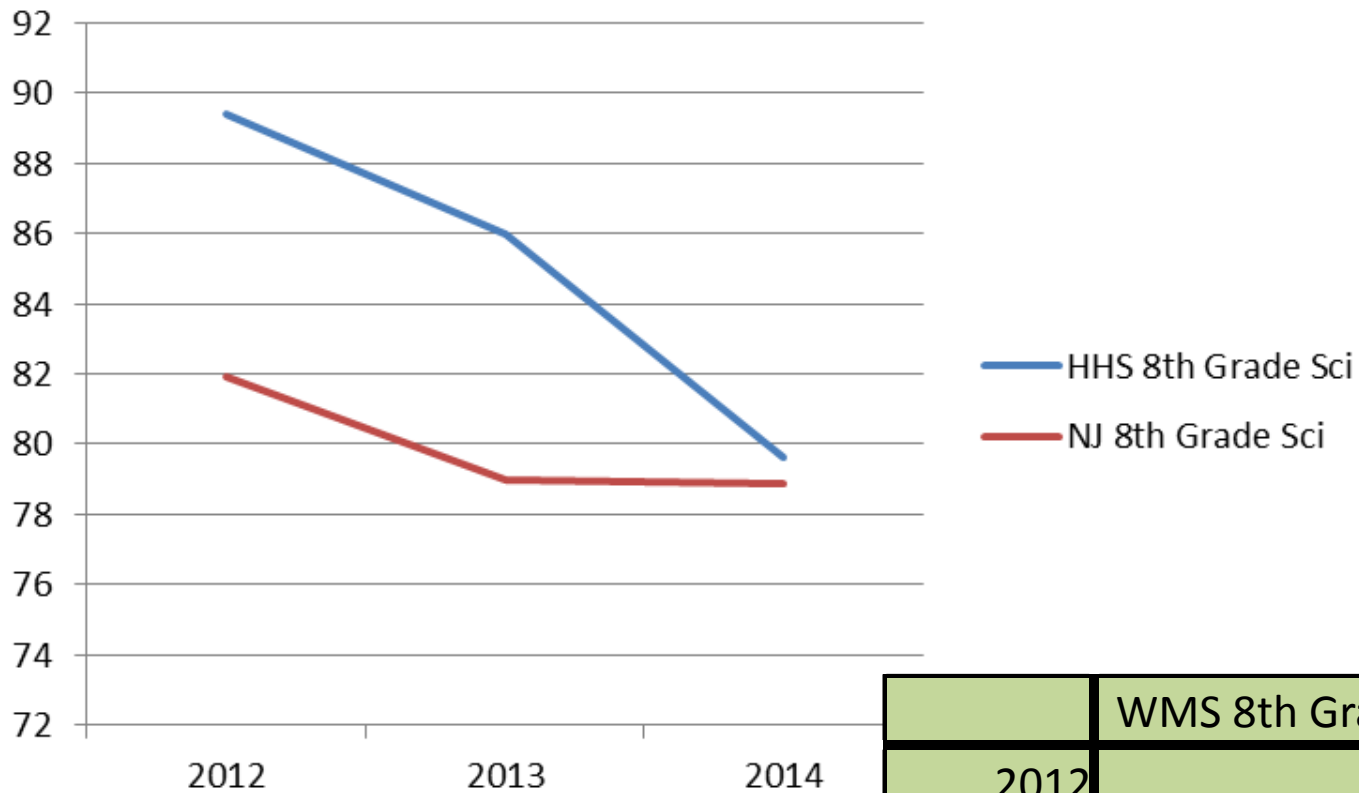
	WMS 8th Grade LA	NJ 8th Grade LA
2012	89.4	82.2
2013	87.7	81.9
2014	84.2	79.8

NJ ASK 8 Mathematics



	WMS 8th Grade MA	NJ 8th Grade MA
2012	78.7	71.6
2013	74.6	69.3
2014	76.4	71.5

NJ ASK 8 Science



	WMS 8th Grade Sci	NJ 8th Grade Sci
2012	89.4	81.9
2013	86	79
2014	79.6	78.9

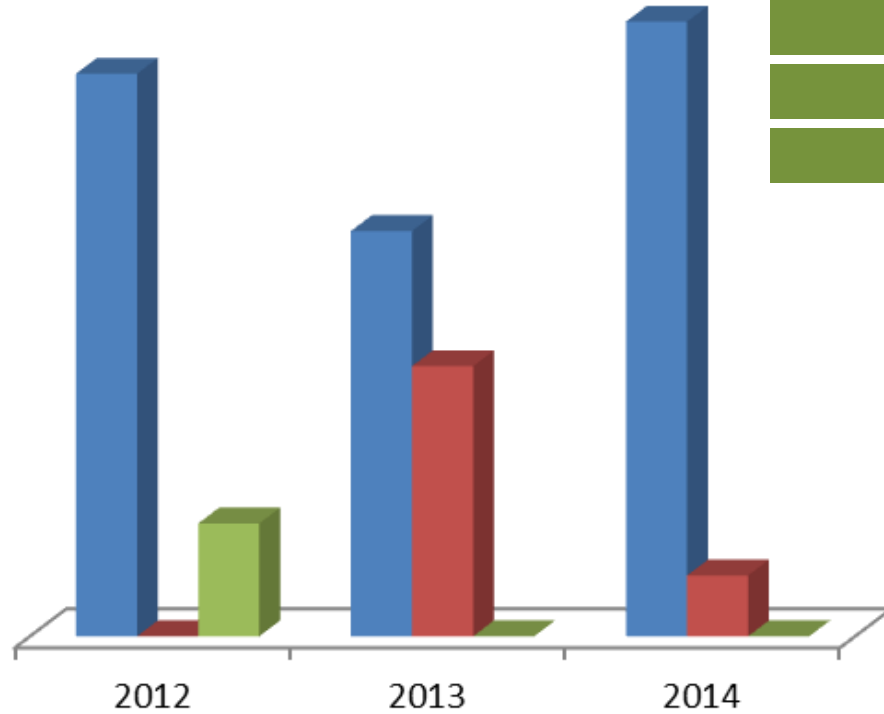
NJ ASK Cohort Analysis

Test	Language Arts Literacy							
	2007	2008	2009	2010	2011	2012	2013	2014
NJASK 3	88.5	86.9	62.6	58.0	59.7	73.9	70.1	76.5
NJASK 4	79.8	86.0	65.1	56.3	52.4	63.0	64.9	68
NJASK 5	91.7	59.6	73.8	66.3	57.2	59.8	62.8	61.5
NJASK 6	77.7	56.1	69.8	69.5	70.8	69.6	71.6	71.1
NJASK 7	90.3	72.1	76.0	69.2	68.3	65.5	65.7	75.8
NJASK 8	89.0	85.2	86.0	91.3	90.7	89.4	87.7	84.2

NJ ASK Cohort Analysis

Test	Mathematics							
	2007	2008	2009	2010	2011	2012	2013	2014
NJASK 3	93.9	86.9	70.7	78.0	72.0	71.0	74.8	67.4
NJASK 4	87.5	84.0	69.8	57.3	75.7	77.8	80.9	74.5
NJASK 5	91.7	69.3	81.9	77.2	71.6	78.5	75.2	84.6
NJASK 6	90.4	64.3	61.2	76.3	76.2	77.7	80.0	81.6
NJASK 7	82.5	65.8	64.4	69.1	78.2	68.1	63.0	78.7
NJASK 8	83.5	74.8	78.1	71.8	90.7	78.7	74.6	76.4

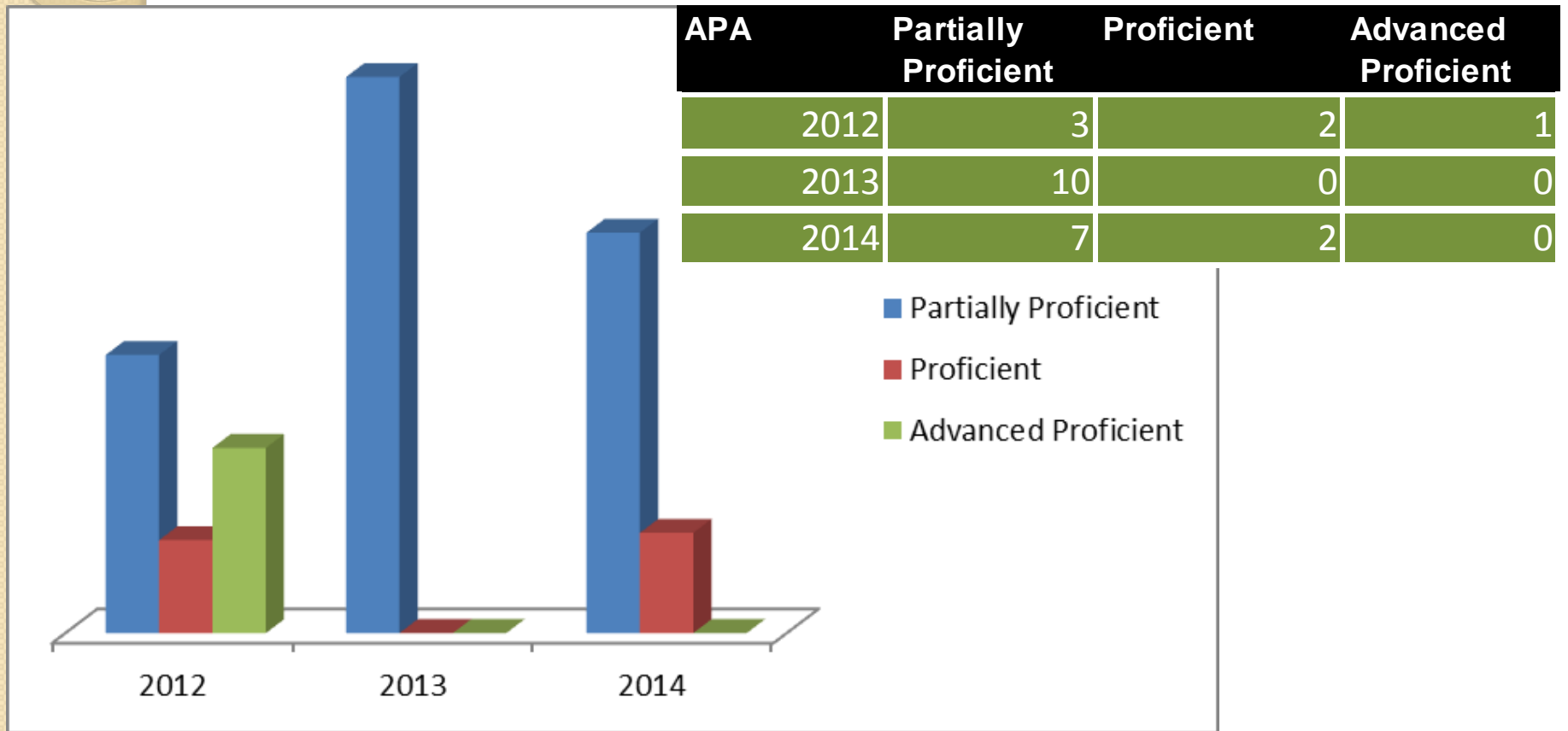
APA Results Language Arts



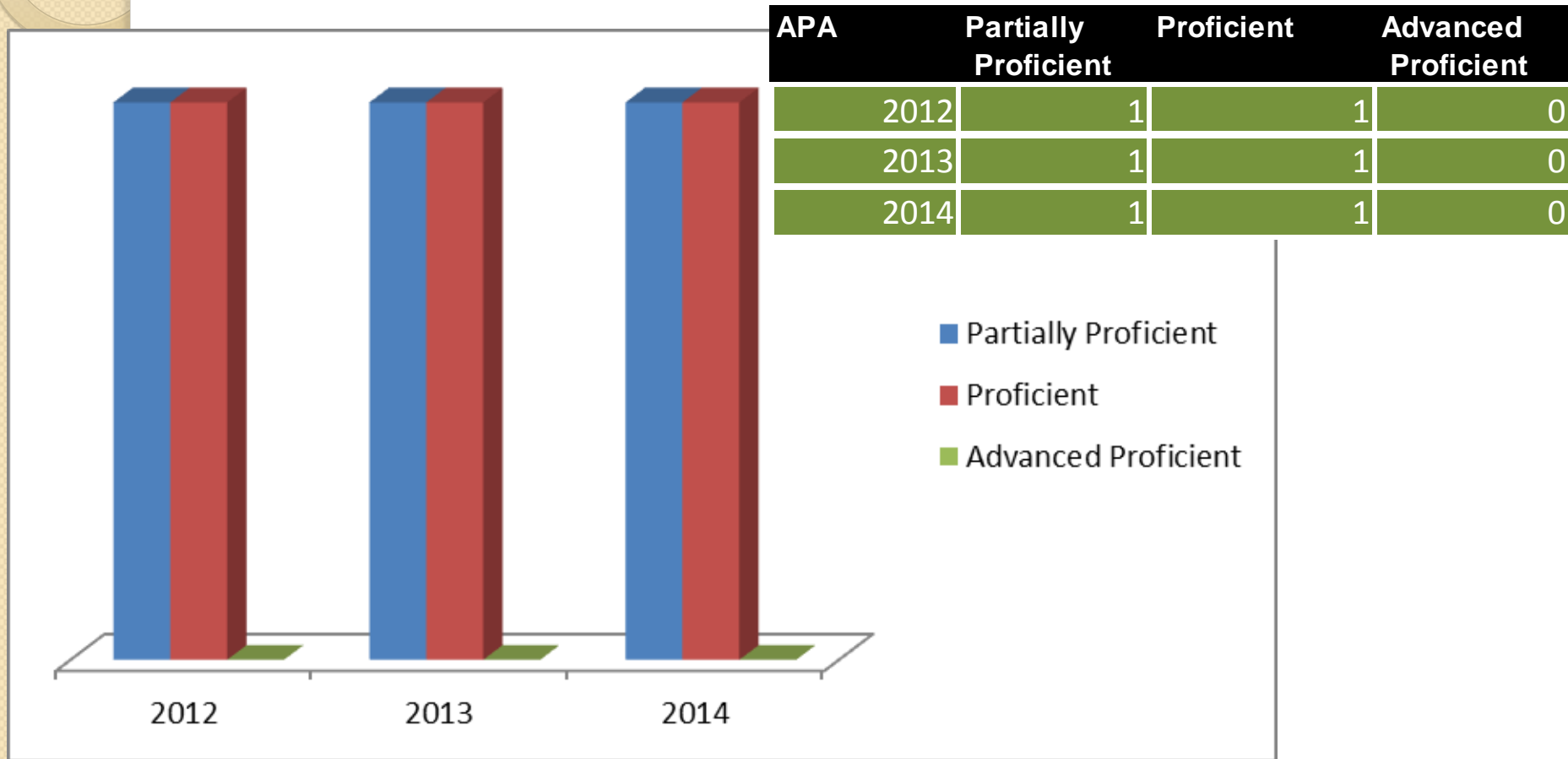
APA	Partially Proficient	Proficient	Advanced Proficient
2012	5	0	1
2013	6	4	0
2014	8	1	0

- Partially Proficient
- Proficient
- Advanced Proficient

APA Mathematics



APA Science



Child Study Team Initiatives

- Developed a Procedures Manual for student crisis intervention
- Organized CST Open Houses for staff to meet with the Team, review IEPs, and sign off on review
- Implemented the Self-Contained Autism program
- Participation in the DLM Field Test
- Implementation of Life Skills as a component of the Self-Contained Multiply Disabled program

Child Study Team Initiatives

- Staff Development included Co-Teaching/Inclusion Models, Functions of Support Staff
- Increasing the use of technology to help special education students (ipad for nonverbal student)
- Delivery of speech and OT therapies in the preschool classes

Instructional Initiatives

Update Curricula with alignment to the NJ CCCS

- Science
- Mathematics
- Language Arts Literacy

Facilitate WMS Guided Reading Book Room

Align Lesson Plans to NJ CCCS

Utilize Benchmark Assessments for Student Learning Objectives

WMS Guided Reading Timeline

2013-2014	2014-2015	2015-2016	2017-2018
Grade 5 Pilot Begins	Grade 5 Implementation	Grade 7-8 Pilots Begin	Grade 7-8 Implementation
Grade 5 Lab Classrooms open	Grade 6 Pilot Begins	Grade 6 Implementation	Continue Lab Classrooms
Grade 6 visits Lab Classroom	Grades 5-6 Lab Classroom	Grades 5-6 Lab Classroom	
	Grades 7-8 visits Lab Classrooms	Grades 7-8 visit Lab Classrooms	

Kindergarten Literacy Data

Kindergarten Literacy Data (Guided Reading and Orton)

	KDI (Mean)	KDI (Median)		Fox in the Box (Mean)	Fox in the Box (Median)		Fox in the Box (High Score)	Fox in the Box (BSIP cut-off)
05-06	118	123		130	130		168	121
06-07	118	122		124	125		165	120
07-08	119	124	Intro. Guided Reading	161	157		294	141
08-09	122	123	Intro. Orton- Gillingham	181	168		315	162
09-10	128	128		186	171		337	171
10-11	117	120		187	178		305	170
11-12	119	122		175	170		321	162
12-13	127	128		183	176		316	173
13-14	122	125		201	183		312	174

KDI - Incoming Kindergarten Assessment Tool

Fox in the Box - Outgoing Kindergarten Assessment Tool

HHS Guided Reading Data

	07-08	08-09	09-10	10-11	11-12	12-13	13-14
Kindergarten	77%	89%	87%	89%	86%	83%	80%
Grade 1	79%	92%	96%	82%	98%	83%	86%
Grade 2	87%	94%	94%	87%	89%	90%	91%
Grade 3	86%	80%	70%	86%	87%	80%	93%
Grade 4	73%	79%	73%	79%	84%	80%	85%

% = % of students on or above grade level

Special Education Growth

	07-08	08-09	09-10	10-11	11-12	12-13	13-14
4+ Levels	47%	62%	29%	59%	35%	50%	63%
3 Levels	33%	15%	24%	13%	38%	21%	10%
2 Levels	10%	15%	29%	13%	15%	17%	19%
1 Level	7%	8%	13%	8%	6%	6%	4%
No measurable growth	3%	0	5%	5%	6%	6%	4%
Total # of Students:	30	39	43	42	48	48	48

Literacy Plus

Literacy Plus Data 2013-14

	October 2012 Text Level	February 2013 Text Level	May 2013 Level	Text Level
Student 1	2	12	18	BSIP '14-15
Student 2	2	12	20	BSIP '14-15
Student 3	0	7	18	BSIP '14-15
Student 4	0	5	14	504 plan/BSIP '14-15
Student 5	n/a	6	16	BSIP '14-15
Student 6	n/a	5	16	BSIP '14-15
Student 7	n/a	7	20	
Student 8	n/a	3	14	retained in Gr. 1

On-Grade Level for June = Text Level 17

HHS MAP 2013-14

Reading Quadrant

		Growth Index	
		Below	Above
Projected Proficiency	Above	23.3% (66)	49.8% (141)
	Below	16.3% (46)	10.6% (30)

Mathematics Quadrant

		Growth Index	
		Below	Above
Projected Proficiency	Above	36.0% (103)	50.0% (143)
	Below	7.3% (21)	6.6% (19)

WMS MAP 2013-14

Reading Quadrant

		Growth Index	
		Below	Above
Projected Proficiency	Above	30.2% (126)	47.0% (196)
	Below	11.3% (47)	11.5% (48)

Mathematics Quadrant

		Growth Index	
		Below	Above
Projected Proficiency	Above	35.1% (147)	39.6% (166)
	Below	15.8% (66)	9.5% (40)

Data Outcomes

- Data Review and Analysis
- Teacher Data Review and Analysis
- Goal Setting for district, buildings and grade levels
- Individual Student Score Analysis
- PD planning

Student Discipline Report Summary

Incident Category Totals 2013-14 Full Year

(7/1/13 – 6/30/14)

- Violence (1) WMS
- Weapon(s) (0)
- Vandalism (1) HHS
- Substance Abuse (1) WMS
- H.I.B. (Confirmed) (7) All WMS

Facility Update

- The Westampton Middle school APR, Hallways and Media center rooms are freshly painted.
- The HHS hallway and APR is freshly painted. The APR ceiling was sandblasted and painted correctly.
- The HHS playground has been upgraded in thanks to the generosity of Westampton Township.
- The HVAC system for each school was balanced for efficiency.

Technology Update

- The district telephone system has been updated.
- Twenty eight wireless access points have been added to our schools.
- Two wireless computer labs are ready for student use at each school.

Financial Update

- District spending frozen as of November 1, 2014.
- In doing this, we hope to maintain our surplus to retain all service and stay under the mandated 2% cap.
- We have incurred unexpected out of district placement costs.

BOE Goals 2014-2015

- **BOE GOAL 1:**
Increase acknowledgement of staff and student achievement.
- **BOE GOAL 2:**
Continue the process of becoming a Certified Board via NJSBA's Academy Program.



THANK YOU!